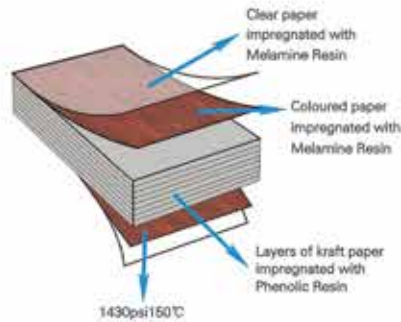




Toilet Cubicles System

Composition of Compact Grade Laminate



Phenolic Compact Laminate is a solid, high pressure and extremely durable decorative building panel, made from layers of quality kraft papers impregnated with phenolic resin, Incorporates a clear overlay on both decorative faces, and manufactured under high pressure and temperature.

The panel is a high performance material.

Features

- Strong resistance to impact
- Self supporting & Long term stability
- No toxic & totally hygienic
- Resistant to moisture & steam
- Resistant to chemical
- Resistant to heat & cigarette burns
- Extremely durable.



Application

Multipurpose Compact Laminate has a wide field of applications,

- Toilet and Shower Partition
- Lockers
- Laboratory Top
- Cabinet
- Vanity top
- Compact Door
- Interior Wall Cladding
- Office Furniture
- School Furniture



مستشفى كارياتاس للأطفال - بيت لحم

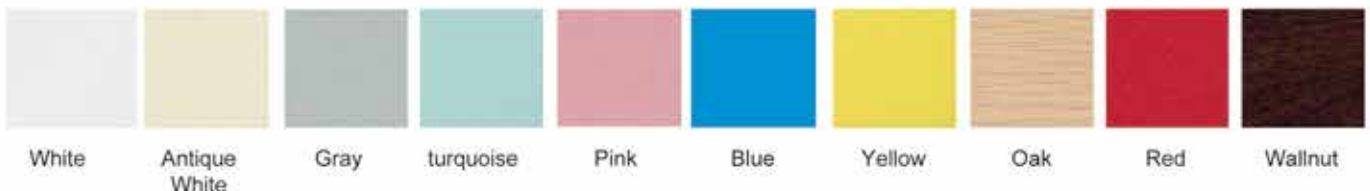
Chem-resistant Laminate

An upgrade of Compact Grade Laminate that are specialized to resist chemicals. The laminate are suitable for educational and medical facilities, such as labrotary top and cabinet, reception counter, ect.

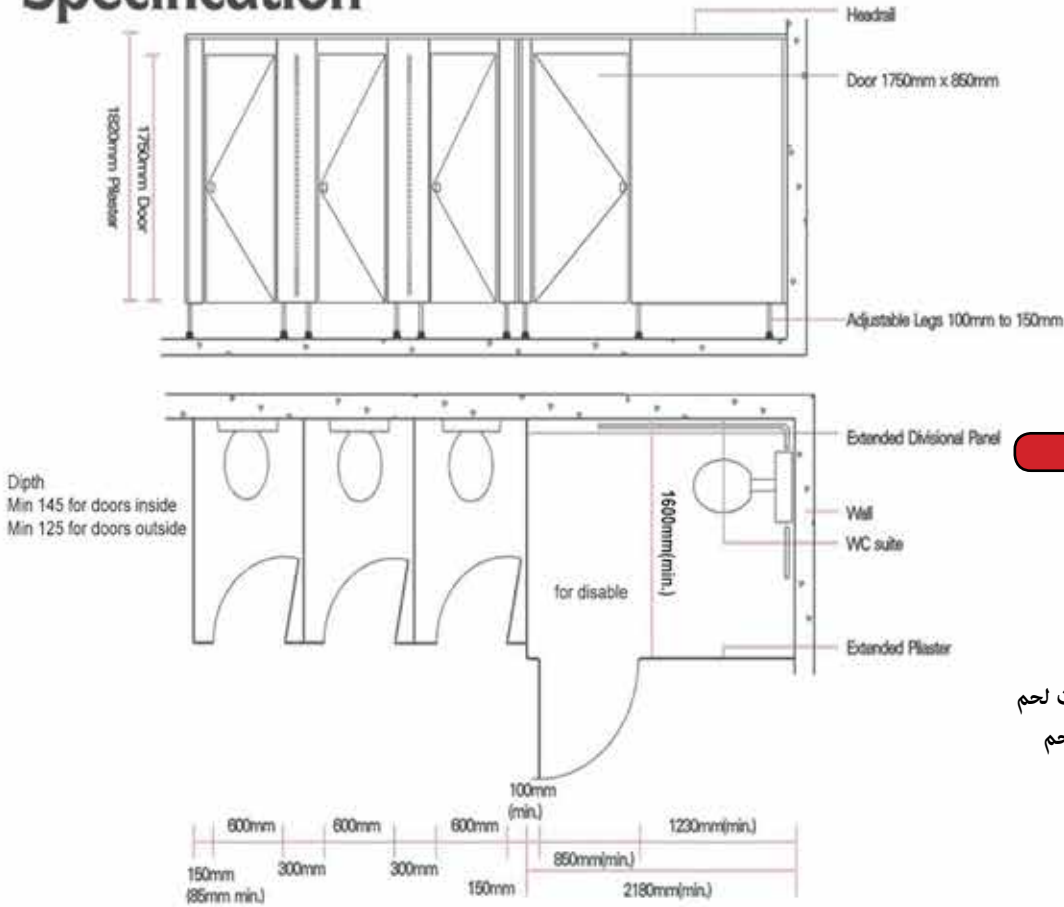


مختبرات مستشفى جنين الحكومي

Our Standard Colors



Specification



المشاريع

- دير اللاتين - بيت حنينا- القدس
- مدرسة العيزرية للأيتام - العزيرية
- صالة العمل الكاثوليكي - بيت لحم
- كلية دار الكلمة - بيت لحم
- كلية الكتاب المقدس - بيت لحم
- مستشفى الكاريتاس للأطفال - بيت لحم
- روضة المستشفى الفرنسي - بيت لحم
- المدرسة الإنجليزية - بيت لحم
- كنيسة المهدي - بيت لحم
- نادي ارثودكسي - بيت ساحور
- مارفرام - بيت جالا
- الكلية الأهلية - رام الله
- مبنى جوال الرئيسي - رام الله
- شركة دار الدواء للأدوية - رام الله
- مستشفى مسلم للعيون - رام الله
- متحف الرئيس عرفات - رام الله
- الوطنية للإتصالات - المبنى الرئيسي - رام الله
- بناية بريكو هاوس - رام الله
- مبنى ال CCC hous - رام الله
- مبنى سلطة النقد-البنك المركزي - رام الله
- معهد ادوارد سعيد - رام الله، بير زيت
- أكاديمية الشباب والرياضة - البيرة
- جامعة بيرزيت
- بير زيت مول
- وحدات حمامات المدرج الروماني-روابي
- جامعة النجاح الوطنية (كلية التربية الرياضية، كلية الحقوق، المراكز العلمية)
- تراي فيتينس - نابلس ، رام الله
- الجامعة الأمريكية - جنين
- كلية تدريب الشرطة - أريحا
- ملعب بلدية الخليل
- جامعة فلسطين التقنية - خضوري - طولكرم
- مراكز شرطة (سعير، العبيدية، الظاهرية، إذنا، عصيرة، طمون، عقربا، كفر زيباد)





Diamond Series

Stainless Steel Diamond Series



Overlap
Auto return hinge



L Corner



Head Rail



Door knob



Coat Hook



Door
Lock



U Bracket



Adjustable Leg

Nylon Elegance Series



Over lap lock



Clothes Hook



Handle



Adjustable Footing



Auto Return Hinge



Corner Fastener



Childs Safety Series

An innovative range of fun, safe and hygienic children's washrooms.

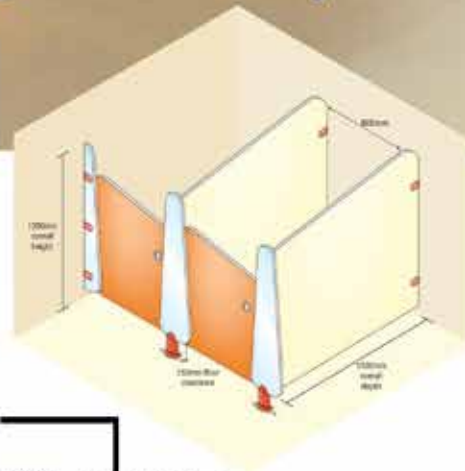
A washroom system specifically designed to meet the demands of children. wavy design to the cubicle doors, pilasters and partitions stimulates the imagination and together with exciting colour palette, gives you the opportunity to create a fun washroom environment. Children's safety is a priority and the **need to supervise is answered by the two door height options**. Equally important is the children's **right to privacy and this is addressed by the full height cubicle partitions**. Safety hinges to **avoid trapped fingers** and indicator bolts with an **emergency release facility** offer peace of mind.

Available in three performance boards,

Childs Safety Series ensures suitability for both wet and dry environments making it ideal for any junior washroom installation.



Childs Safety Series - Options



مستشفى الكارثاس للأطفال
بيت لحم
ابواب خاصة
لاصابع الاطفال

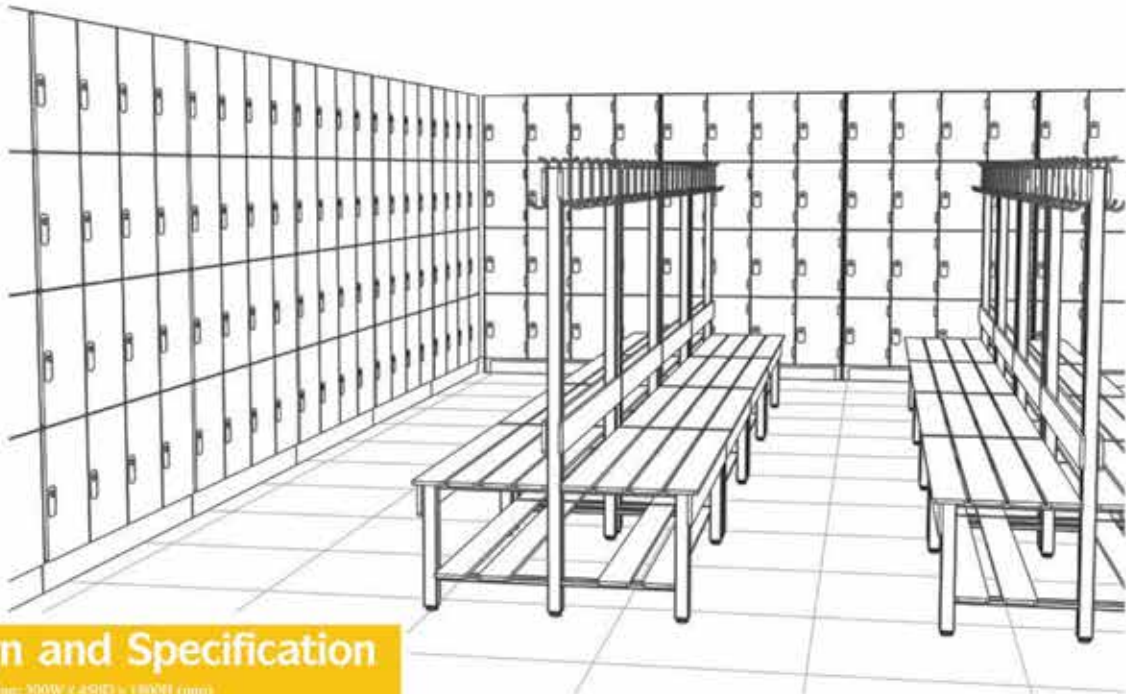


HPL Lockers System

HPL lockers are made of 100% original Compact Laminate (Solid Phenolic Panel) that to secure your leisure life.

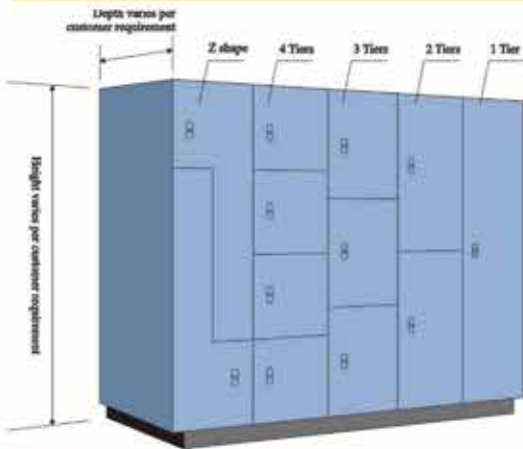
These lockers are suitable for high humidity areas, such as fitness clubs, sauna rooms, swimming pools and sport centers, however, they are also widely used in schools, hospitals, shopping malls and hotels that have an extensive range of style and specification.

Custom design is also available.



Design and Specification

Standard dimension: 300W x 450D x 1800H (mm)



Benefits of HPL Lockers System

- Excellent resistance to impact and mechanical stresses
- Steam and moisture resistance
- Does not rust, cultivate fungi and totally hygienic
- Easy to install, clean and maintain
- A wide color ranges for decorative both sides
- Extremely durable



Type	Description
1T	Single Door locker unit. Spacious and ideal for athletic clubs, gyms and other locations requiring larger storage spaces.
2T	2 tiers locker unit. Hanging rail. Any application.
3T	3 tiers locker unit. Large bag storage. Such as schools, shopping malls, train stations, etc.
4T	4 tiers locker unit. Small bag storage. Such as supermarket, skating rinks and bowling alleys.
ZS	Z-Shape & 2 tiers. Offer the space for clothing hook which are suitable for hospital staff, nurses and athletic clubs.



Coin Operated Lokers



Size 180*90*45 2 columns 12 doors epoxy paint coating with stainless steel coin machine with master

Sentinel Lockers gives you the features you need most as standard items, not as expensive options. Features like:

- Adjustable coin combinations up to four quarters collect, U.S. Dollar compatible, coin return or token operation and more. Free check capability.
- Automatic coin rejection
- Pry resistant locks located behind door, out of sight from pry-out vandals, just like the front door of your home.
- Master security keys. Unit can be opened for inspection with master key and closed to locked position without having to add coins - a feature you'll surely appreciate when inspections are necessary.
- On the spot rekeying reduces your out of service time.
- Lock cylinder does not have to be sleeved when removed.
- Instant lock mode conversion from front of locker without removing lock.
- Concealed hinges.
- The lock system maintains a .20 differential between cuts on keys. This depth eliminates the potential of interchanging worn keys and makes locks more pick resistant.
- stainless steel lock with anti corrosion resistant materials



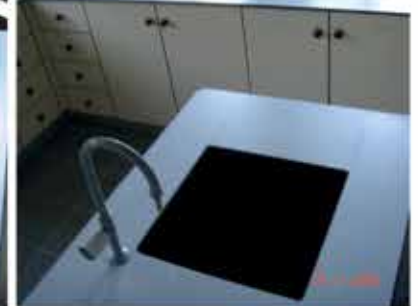
Different applications fom HPL



وجوه للمغاسل



أبواب غرف العمليات مقاومة للجراثيم

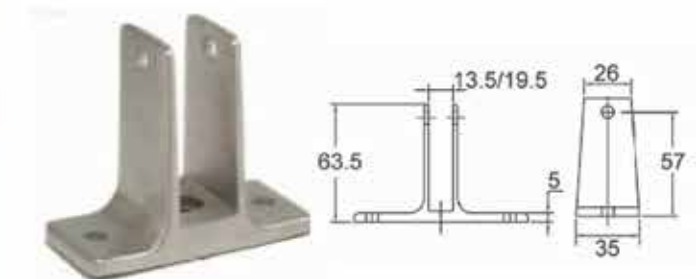
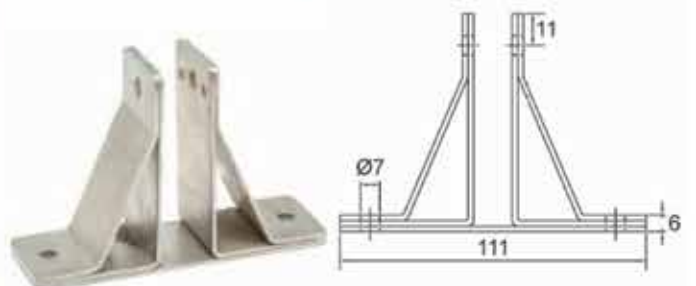


وجوه وأحواض للمختبرات مقاومة للمواد الكيميائية

Penches



Urinals





Shower & Toilete Room Accessories



