

Wooven Vinyle Carpet from 2tec2 Belgium

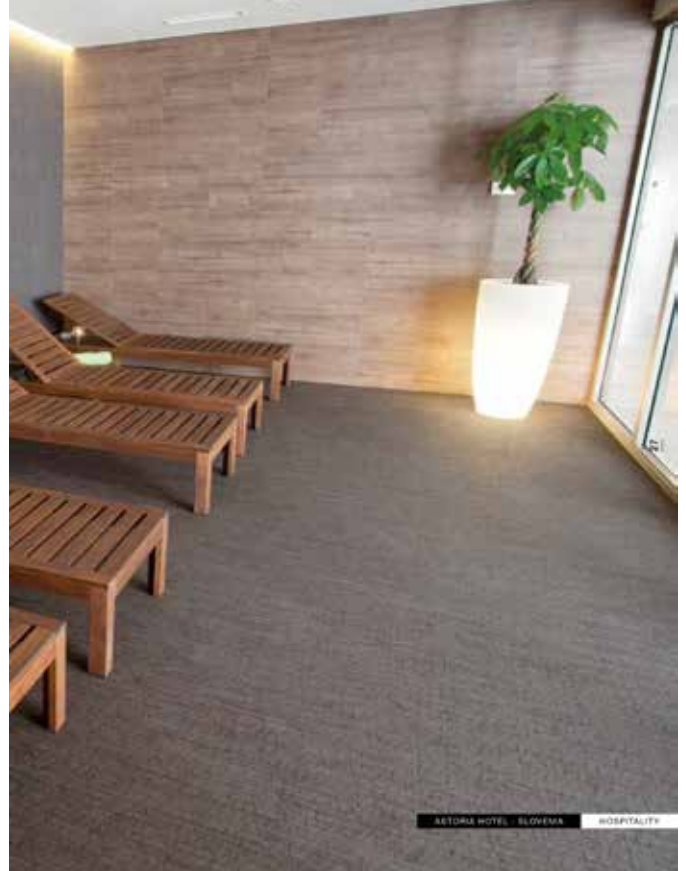
In its range of vinyl flooring propositions, 2tec2 has created a unique collection that is sure to take the centre stage in your project. Through innovative techniques and inspired by nature, 2tec2 has envisioned a flooring proposition that drastically changes appearance based on the viewing angle of the spectator



أرضيات الطابق الرابع - شركة الإتصالات الفلسطينية - المقر الرئيسي نابلس



أرضيات الطابق الثالث - شركة جوال - المقر الرئيسي رام الله



Advantages of Wooven Vinyle Carpet over traditional pile Carpets :

• **Appearance retention** : the change in appearance of a pile fabric is generally far more important. Especially the compacting of the pile, knowing that the density is $< 0,15 \text{ g/cm}^3$, causes walking lanes. Fabrics based on olefin and PET yarns are even more sensible than Polyamide and Wool.

2tec2 has in the attached reports :

a score of 4,5 on a scale of 5 with a comment No or Negligible change.

No loss of thickness after testing

Results a pile carpet never achieves. Note 4 for is the maximum and a thickness loss of 40 % is rather the rule than the exception.

• **Fastnesses** : 2tec2 has a perfect light fastness > 7 and a very good UV stability making it suitable for outdoor use. Water fastness and resistance to chemicals is extremely good. Results a pile carpet never can achieve.

• **Resilience** : residual indentation (compression and recovery) is far better with flat woven vinyl as 2tec2












• **IAQ** : Indoor Air Quality : 2tec2 is the flat woven vinyl with the lowest emission level, thus performing as good as pile carpet and compared with certain SBR finished carpet even better.

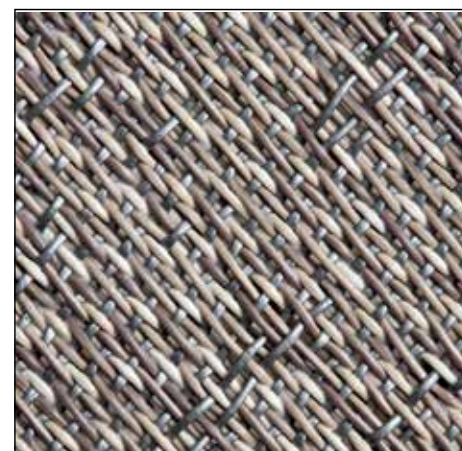
• **Maintenance** : as PVC is a very inert material it is very stain resistant. All normal life stains as coffee, wine, orange juice, ketchup, dressing etc. are very easy to remove. This is not possible with Wool or polyamide, even solution dyed nylon will be irreversibly stained by coffee and wine.

• **Hygiene** : vinyl has a built in antimicrobial and fungi static properties. Ref attached report. Soft flooring needs extra pile treatment that influence other characteristics negatively, to achieve comparable results. 2tec2 can easily be disinfected, this is far more difficult with pile carpet.

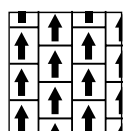
Vinyl / Tiles

Carpet tiles from 2tec2 are designed for long and intensive use thanks to the innovative material they are made from: a glass fibre core coated with vinyl and finished with a homogeneous backing. A high-tech floor covering that offers quite a few advantages. First of all, the carpet tiles dampen noise and provide a pleasant, warm walking contact. Furthermore, the product is water repellent, wear resistant and suited both for indoor and outdoor use. The woven vinyl fabric cannot absorb dirt, so that stains can be easily removed. In brief, a durable solution for commercial or residential projects, both indoors and outdoors. As a part of the vinyl tiles collection, the groundbreaking Seamless Tiles (ST) are really one of a kind: when fitted in a uni-directional pattern, these floor tiles have the sleek, unbroken appearance of a wall-to-wall floor covering.

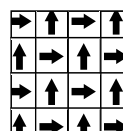
Manufacturing process	Jaquard woven	
Composition	%80 vinyl / %20 fiberglass	
Backing	Vinyl	
 Total thickness	ISO 1765	3,3 mm / 0.13"
 Total weight	ISO 8543	4500 g/m ² 132.7 oz/yd ²
 Tile size 16 pcs per box	EN 994	50 cm x 50 cm 19.69" x 19.69"
 Level of Use	EN 15114 ASTM D5252	Class 33 Heavy commercial use
 Castor chair suitability	EN 985	Continuous use
 Reaction to fire	EN 1-13501	Bfl S1
 Walking test	ISO 6356 AATC 2006-134	< 2 kv permanently antistatic
 Light fastness	ISO -105B02	≥ 7
 Slip resistance	EN 13893 ASTM C07-1028	≥ 0,3 0,85
 Impact sound	ISO 8-140	14 dB
 Dimensional stability	EN 986 ISO 2551	Meets the requirements
CE Certificate	EN 14041	-0493CPD0036-
Recommended glue	Peel up glue (e.g. 'BlitzFix' by Wulff - www.wulff-gmbh.de)	



Fitting Pattern







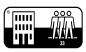







Ashlar

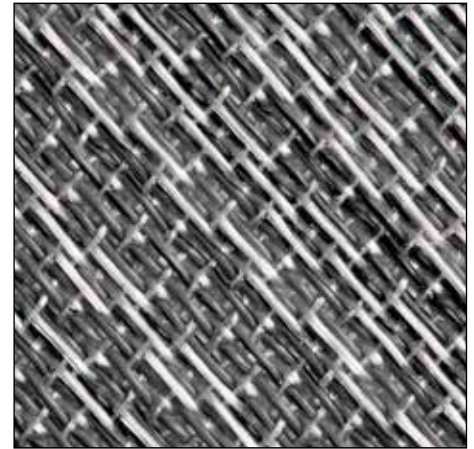


Quarterturn

Vinyl / Rolls

2tec2's woven vinyl range is a synthetic floor covering, composed of vinyl yarns with glass fibre core, woven together on jacquard looms, and finished with a homogenous vinyl backing reinforced with a non-woven glass fibre. Thanks to its unique composition, this superior flooring is resistant to wear and adheres to the highest quality standards. For high traffic locations, 2tec2 delivers all of the advantages of woven vinyl - durability, hygiene and chemical, water and stain resistance - combined with the visual appeal of woven textiles.

	Manufacturing process	Jacquard woven	
	Composition	%80 vinyl / %20 fiberglass	
	Backing	Vinyl	
	Total thickness	ISO 1765	2,5 mm 0.1"
	Total weight	ISO 8543	2200 g/m ² 64.88 oz/yd ²
	Roll width	200 cm 6.6'	
	Roll length	ca. 30 m 32.8 yd	
	Level of Use	EN 15114 ASTM D5252	Class 33 Heavy commercial use
	Castor chair suitability	EN 985	Continuous use
	Reaction to fire	EN 1-13501	Bfl S1
	Walking test	ISO 6356 AATC 2006-134	< 2 kv permanently antistatic
	Light fastness	ISO -105B02	≥ 7
	Slip resistance	EN 13893 ASTM C07-1028	≥ 0,3 0,85
	Impact sound	ISO 8-140	14 dB
	CE Certificate	EN 14041	-0493CPD0035-
	Recommended Glue^(*)	Multi-Coll (www.wulff-gmbh.de)	



(*) Multi-Coll is the only certified adhesive glue. Any other glue will not ensure closed seams on the long term and claims will not be covered by 2tec2 warranty.





14

Wooven Vinyl Carpet